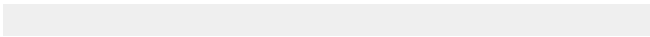




Corporate Governance	Investor Services	Press Releases	Stock Quote	Credit Ratings	SEC Filings
Overview	Shareholder Services		Prices	Corporate Structure	Insider Ownership &
Board of Directors	Dividend Reinvestment and Stock Purchase Plan		Dividends	Debt Overview	Filings
Management	Information Request		Analyst Coverage	Fixed Income Analysis	Annual Reports
Corporate Guidelines	Email Alerts		Yield Estimate	Important Tax Information	Quarterly Financials & Non-
Ethics Policy	FAQ		Insider Ownership		-GAAP Reconciliations
Political Spending Policy	Contact Us		Cost Basis for Previous Transactions		
Committee Composition			Cost Basis Calculator		
Contact the Board			Investment Calculator		
			Important Tax Information		





Q1 2018 EARNINGS



2017 ANNUAL REPORT

WINDSTREAM
ACQUIRES MASS COM

WINDSTREAM
COMPLETES
ACQUISITION OF
BROADVIEW
NETWORKS

CONTACT INFO

Transfer Agent

Computershare Trust Company, N.A.
In the US: 1-800-697-8153
Outside the US: 1-312-360-5207
<http://www.computershare.com/us/investor>

Windstream Retail Inquiries

4001 Rodney Parham Road
Little Rock, AR 72212-2442
E-mail: Peyton.Dobrovich@windstream.com

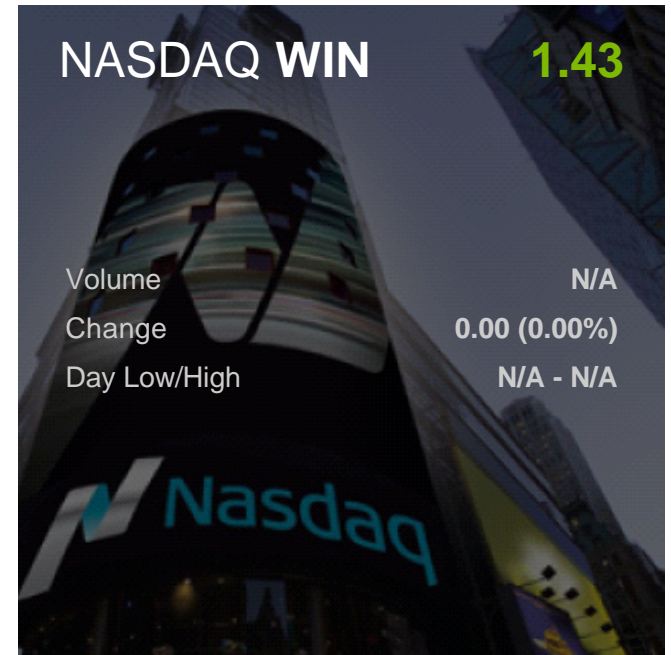
Windstream Institutional Inquiries

4001 Rodney Parham Road
Little Rock, AR 72212-2442
E-mail:

NASDAQ WIN

1.43

Volume	N/A
Change	0.00 (0.00%)
Day Low/High	N/A - N/A



協

劍

燻

荃

杆

叩

宥

俅

Company

[Investor Relations](#)

[Careers](#)

[Press](#)

[Site Map](#)



Business Divisions

[Enterprise](#)

[Small Business](#)

[Residential](#)

[Wholesale](#)

Partners & Programs

[Channel Partners](#)

[Referral Partners](#)

Legal

[Privacy](#)

[Terms of Use](#)

[Legal Notices](#)

[Broadband Network Statement](#)