



Corporate Governance Investor Services

Overview	Shareholder Services	Press Releases	Stock Quote	Credit Ratings	SEC Filings
Board of Directors	Dividend Reinvestment and Stock Purchase Plan	Prices	Corporate Structu	Insider Ownership &	
Management	Information Request	ids	Debt Overview	Filings	
Corporate Guidelines	Email Alerts	Analyst Cov	Fixed Income Ana	Annual Reports	
Ethics Policy	FAQ	gs Estimates	onal Ownership	Quarterly Financials & Non	
Political Spending Polic	Contact Us	asis for Previous Transactions		-GAAP Reconciliations	
Committee Composition		Cost Basis Calculator			
Contact the Board		Investment Calculator			
		Important Tax Information			



Windstream to acquire  
Broadview Networks

## LATEST NEWS

[Read more](#)



## RESULTS

1Q 2017 Results

## EARNINGS

[Read more](#)

---



## Q1 2017 EARNINGS

## WINDSTREAM TO ACQUIRE BROADVIEW NETWORKS

## MERGER OF WINDSTREAM AND EARTHLINK



## 2016 ANNUAL REPORT

## CONTACT INFO

### Transfer Agent

Computershare Trust Company, N.A.  
In the US: 1-800-697-8153  
Outside the US: 1-312-360-5207  
<http://www.computershare.com/us/investor>

### Windstream Retail Inquiries

4001 Rodney Parham Road  
Little Rock, AR 72212-2442  
E-mail: [Peyton.Dobrovich@windstream.com](mailto:Peyton.Dobrovich@windstream.com)

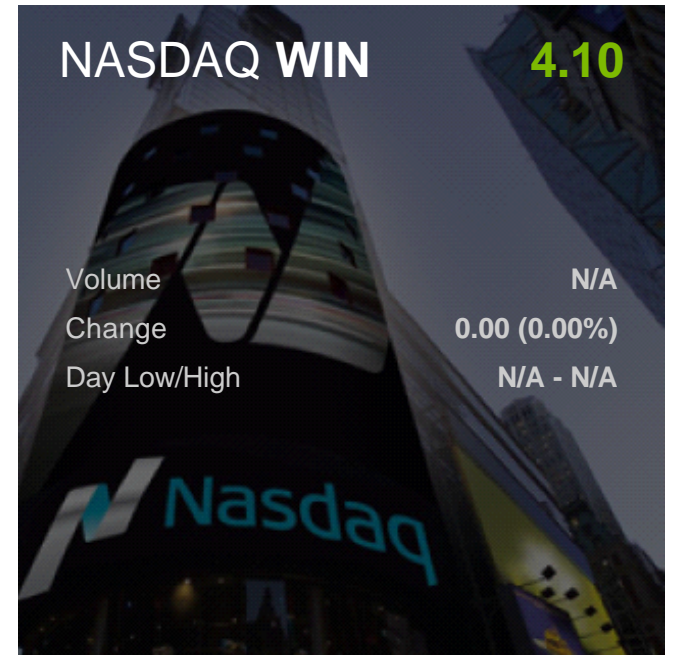
### Windstream Institutional Inquiries

4001 Rodney Parham Road  
Little Rock, AR 72212-2442  
E-mail:

## NASDAQ WIN

4.10

Volume	N/A
Change	0.00 (0.00%)
Day Low/High	N/A - N/A



協

劍

燻

荃

杆

叩

宥

俅

## Company

[Investor Relations](#)

[Careers](#)

[Press](#)

[Site Map](#)



## Business Divisions

[Enterprise](#)

[Small Business](#)

[Residential](#)

[Wholesale](#)

## Partners & Programs

[Channel Partners](#)

[Referral Partners](#)

## Legal

[Privacy](#)

[Terms of Use](#)

[Legal Notices](#)

[Broadband Network Statement](#)