



Windstream to acquire
Broadview Networks

LATEST NEWS

[Read more](#)



RESULTS

1Q 2017 Results

EARNINGS

[Read more](#)



Q1 2017 EARNINGS

WINDSTREAM TO ACQUIRE BROADVIEW NETWORKS

MERGER OF WINDSTREAM AND EARTHLINK



2016 ANNUAL REPORT

CONTACT INFO

Transfer Agent

Computershare Trust Company, N.A.
In the US: 1-800-697-8153
Outside the US: 1-312-360-5207
<http://www.computershare.com/us/investor>

Windstream Retail Inquiries

4001 Rodney Parham Road
Little Rock, AR 72212-2442
E-mail: Peyton.Dobrovich@windstream.com

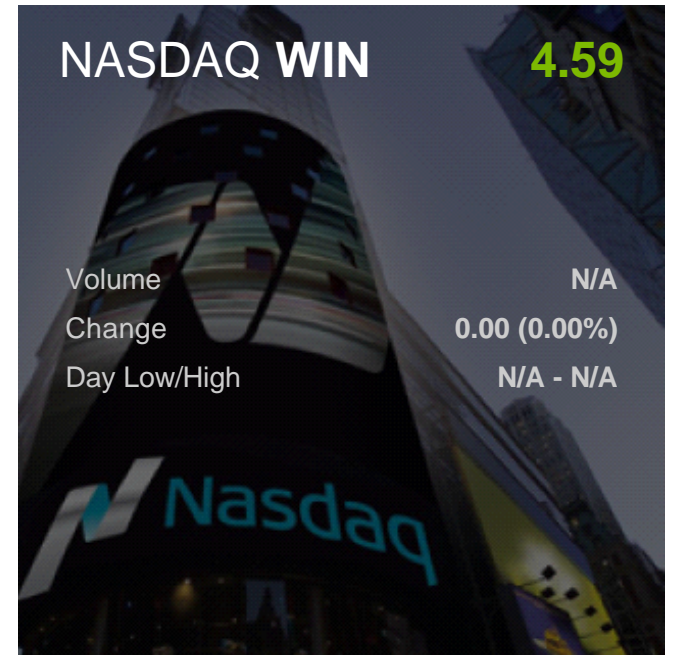
Windstream Institutional Inquiries

4001 Rodney Parham Road
Little Rock, AR 72212-2442
E-mail:

NASDAQ WIN

4.59

Volume	N/A
Change	0.00 (0.00%)
Day Low/High	N/A - N/A



協

劍

燻

荃

杆

叩

宥

俅

Company

[Investor Relations](#)

[Careers](#)

[Press](#)

[Site Map](#)



Business Divisions

[Enterprise](#)

[Small Business](#)

[Residential](#)

[Wholesale](#)

Partners & Programs

[Channel Partners](#)

[Referral Partners](#)

Legal

[Privacy](#)

[Terms of Use](#)

[Legal Notices](#)

[Broadband Network Statement](#)