



Corporate Governance Investor Services

Overview	Shareholder Services	Press Releases	Stock Quote	Credit Ratings	SEC Filings
Board of Directors	Dividend Reinvestment and Stock Purchase Plans	Analyst Coverage	Fixed Income Analysis	Insider Ownership & Filings	
Management	Information Request	Analyst Coverage	Fixed Income Analysis	Annual Reports	
Corporate Guidelines	Email Alerts	Analyst Coverage	Fixed Income Analysis	Quarterly Financials & Non-GAAP Reconciliations	
Ethics Policy	FAQ	Analyst Coverage	Fixed Income Analysis		
Political Spending Policy	Contact Us	Analyst Coverage	Fixed Income Analysis		
Committee Composition		Analyst Coverage	Fixed Income Analysis		
Contact the Board		Analyst Coverage	Fixed Income Analysis		



Windstream to acquire
Broadview Networks

LATEST NEWS

[Read more](#)



RESULTS

1Q 2017 Results

EARNINGS

[Read more](#)



Q1 2017 EARNINGS

WINDSTREAM TO ACQUIRE BROADVIEW NETWORKS

MERGER OF WINDSTREAM AND EARTHLINK



2016 ANNUAL REPORT

CONTACT INFO

Transfer Agent

Computershare Trust Company, N.A.
In the US: 1-800-697-8153
Outside the US: 1-312-360-5207
<http://www.computershare.com/us/investor>

Windstream Retail Inquiries

4001 Rodney Parham Road
Little Rock, AR 72212-2442
E-mail: Peyton.Dobrovich@windstream.com

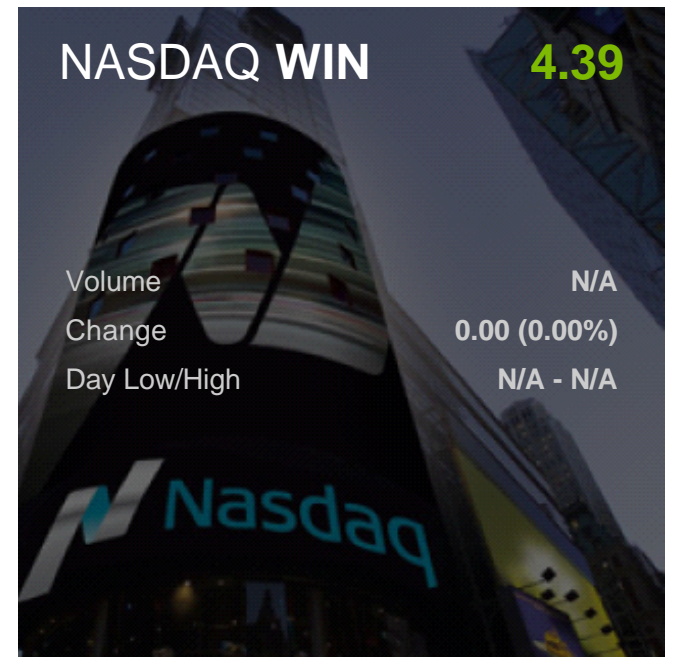
Windstream Institutional Inquiries

4001 Rodney Parham Road
Little Rock, AR 72212-2442
E-mail:

NASDAQ WIN

4.39

Volume	N/A
Change	0.00 (0.00%)
Day Low/High	N/A - N/A



協

劍

燻

荃

杆

叩

宥

俅

Company

[Investor Relations](#)

[Careers](#)

[Press](#)

[Site Map](#)



Business Divisions

[Enterprise](#)

[Small Business](#)

[Residential](#)

[Wholesale](#)

Partners & Programs

[Channel Partners](#)

[Referral Partners](#)

Legal

[Privacy](#)

[Terms of Use](#)

[Legal Notices](#)

[Broadband Network Statement](#)